

8524

CONTRACTOR REPORT

SAND87-7174
Unlimited Release
UC-70

RS-8232-2/69138



8232-2/069138



00000001 -

Studies of Electrical and Electromagnetic Methods for Characterizing Salt Properties at the WIPP Site, New Mexico

C. K. Skokan, M. C. Pfeifer, G. V. Keller, H. T. Andersen
Dept. of Geophysics
Colorado School of Mines
Golden, Colorado 80401

Prepared by Sandia National Laboratories Albuquerque, New Mexico 87185
and Livermore, California 94550 for the United States Department of Energy
under Contract DE-AC04-76DP00789

Printed June 1989

Issued by Sandia National Laboratories, operated for the United States Department of Energy by Sandia Corporation.

NOTICE: This report was prepared as an account of work sponsored by an agency of the United States Government. Neither the United States Government nor any agency thereof, nor any of their employees, nor any of their contractors, subcontractors, or their employees, makes any warranty, express or implied, or assumes any legal liability or responsibility for the accuracy, completeness, or usefulness of any information, apparatus, product or process disclosed, or represents that its use would not infringe privately owned rights. Reference herein to any specific commercial product, process, or service by trade name, trademark, manufacturer, or otherwise, does not necessarily constitute or imply its endorsement, recommendation, or favoring by the United States Government, any agency thereof or any of their contractors or subcontractors. The views and opinions expressed herein do not necessarily state or reflect those of the United States Government, any agency thereof or any of their contractors.

Printed in the United States of America. This report has been reproduced directly from the best available copy.

Available to DOE and DOE contractors from
Office of Scientific and Technical Information
PO Box 62
Oak Ridge, TN 37831

Prices available from (615) 576-8401, FTS 626-8401

Available to the public from
National Technical Information Service
US Department of Commerce
5285 Port Royal Rd
Springfield, VA 22161

NTIS price codes
Printed copy: A02
Microfiche copy: A01

STUDIES OF ELECTRICAL AND ELECTROMAGNETIC METHODS FOR CHARACTERIZING SALT PROPERTIES AT THE WIPP SITE, NEW MEXICO

C.K. Skokan, M.C. Pfeifer, G.V. Keller, and H.T. Andersen

Dept. of Geophysics
Colorado School of Mines
Golden, Colorado 80401

ABSTRACT

At the Waste Isolation Pilot Project Site in southeastern New Mexico, technical and engineering issues related to the long-term storage of hazardous wastes in bedded salt are being studied. For nuclear waste repositories with both long operational periods (50 yr) and long performance assessment periods (10000 yr), the Disturbed Rock Zone (the zone of rock in which the mechanical and hydrologic properties have changed in response to excavation; abbreviated as DRZ) is important to both operational (e.g., slab or fracture failure of the excavation) and long-term performance (e.g., seal system performance and fluid transport). Because of the large contrast in electrical conductivity between crystalline salt and salt saturated with water, it is to be expected that electrical geophysical methods may play an important role in delineating portions of the DRZ. The Colorado School of Mines, under contract to Sandia National Laboratories, has carried out experimental surveys using the direct current electrical method and two electromagnetic methods underground in the mine workings. The results suggest that the various electrical methods are effective in locating low resistivity zones in the salt, which probably represent moisture-rich zones. Furthermore, it appears that such measurements might well be further optimized in terms of survey effort and design of systems to provide a high response to small-scale conductive features in the salt.

ACKNOWLEDGMENTS

The authors wish to thank Dr. David Borns and Sandia National Laboratories in Albuquerque, New Mexico for their assistance and financial support. Dan Garber of Sandia National

Laboratories is thanked for his assistance in getting the manuscript ready for publication.

CONTENTS

BACKGROUND	1
IN-MINE ELECTROMAGNETIC SURVEYS	3
IN-MINE ELECTRICAL (DC) MEASUREMENTS	7
Experimental Setup	7
Apparent Resistivity with a Uniform Earth As a Reference	7
Apparent Resistivity with a Three-Layer Reference Earth	10
CONCLUSIONS	16
REFERENCES	17

Figures

1. Stratigraphic Section for the WIPP Site	2
2. Location Map of EM-3 and EM-31 Traverses in the WIPP Underground Workings	4
3. Plot of Conductivity vs. Distance for EM-31 Data Recorded in Drift N1100 between E140 and E1540	4
4. Conductivity vs. Distance in E140 from S3700 to S2100 for EM-31	5
5. Histogram of Conductivity for Drift N1100 Measured with the EM-31	5
6. Conductivity vs. Station Number for the EM-34, Recorded in Drift N1100 between E140 and E1540 with a 20-meter Loop Separation	6
7. Relationship between Apparent Resistivity and Water Content for Different Factors of Concentration Showing Ranges for Resistivity and Water Contents	6
8. Location Map for DC Resistivity Measurements	8
9. Typical DC Recording	8
10. Cumulative Conductance vs. Depth for WIPP 22 Resistivity Log	9
11. The Three-Layer Model	11
12. Electric Field Curve for Three-Layer Earth	11
13. Total Potential Curve for Three-Layer Earth	12
14. Potential Curves for Line Sources A and B	12
15. The Specific Three-Layer Model	14
16. Distribution of Apparent Resistivities in ohm-m for Three-Layer Earth	14

STUDIES OF ELECTRICAL AND ELECTROMAGNETIC METHODS FOR CHARACTERIZING SALT PROPERTIES AT THE WIPP SITE, NEW MEXICO

Background

The Waste Isolation Pilot Plant (WIPP), located 23 miles east of Carlsbad in southeastern New Mexico, is being constructed in part to evaluate engineering and technical problems associated with the long-term storage of nuclear waste in bedded salt. The facility is being constructed in rocks of the Salado Formation of Permian age (see Figure 1), at a depth beneath the surface of approximately 650 meters. The Salado Formation is part of a 1.2-km-thick layered evaporite sequence in the Delaware Basin of southeastern New Mexico (Powers et al., 1978; Barrows and Fett, 1985). Rock units of interest in this report are Ochoan, with the exception of the underlying Delaware Mountain Group (DMG). The oldest Ochoan unit is the Castile Formation, which overlies the Bell Canyon Formation of the DMG (Figure 1). Locally, the Castile consists of three anhydrite units separated by two halite units. Above the Castile stratigraphically is the Salado Formation, which consists of halite, anhydritic and/or polyhalitic halite, and argillaceous halite. Overlying the Salado is the Rustler Formation, which contains siltstones, anhydrites, dolomitic siltstones, dolomites, and halite.

At the WIPP Site, the beds are almost flat, dipping to the southeast at only 10 meters per kilometer. Locally, deformation has produced anticlines in the Castile and lower Salado formation (Borns et al., 1983). Portions of the Rustler and Dewey Lake formations may exhibit local zones of dissolution, breccia pipes, joints, and fractures (Barrows and Fett, 1985). Underground at the WIPP Site within the Salado Formation, fractures within salt

and anhydrite, and zones of brine influx have been observed from the excavation. The characterization of these fractures and zones of brine influx is important to the evaluation of operational (e.g., slab or fracture failure of the excavation) and long-term performance (e.g., seal system performance and fluid transport) of the WIPP Site. Therefore, in order to guide both construction and performance assessment, it is essential that the capability for detecting and mapping fractures and brine concentration in salt be developed.

The rock property which is most sensitive to the presence of water is the electrical resistivity (or conductivity, which is the reciprocal of resistivity, and the units for conductivity [millisiemens] and resistivity [ohm-m] are used interchangeably). Pure (anhydrous) rock salt is an insulator, having a resistivity of thousands of Ω -m (Lishman, 1961). On the other hand, evaporite sequences with thin layers of anhydrite and a high content of hygroscopic salts have a resistivity of tens to hundreds of Ω -m (Kessels et al., 1985). The electrical resistivity of evaporites appears to obey Archie's law relating bulk resistivity to water content:

$$\frac{\rho_o}{\rho_w} = \frac{a}{\phi^m}$$

where:

- ρ_o = the resistivity of the rock
- ρ_w = the resistivity of the pore fluid
- a = a constant
- ϕ = the porosity
- m = the cementation factor.

As a consequence, water contents as low as a few hundred parts per million (by weight)

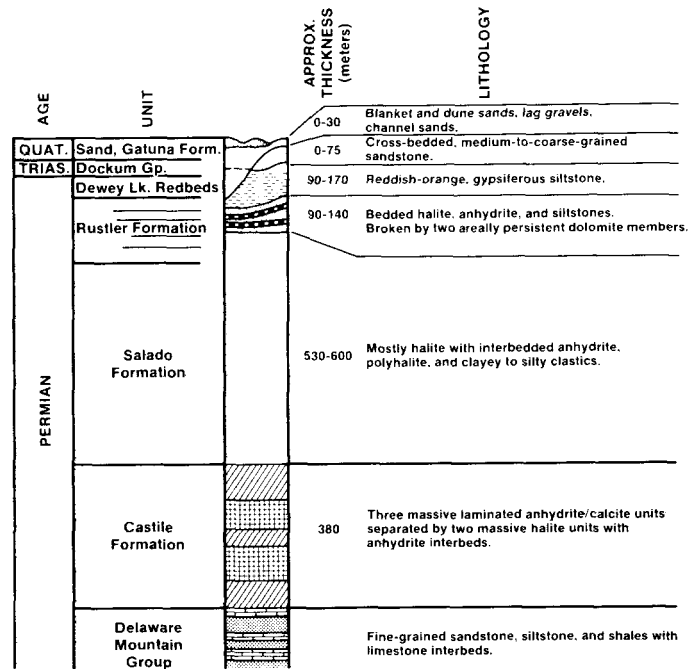


Figure. 1 Stratigraphic Section for the WIPP Site

will affect the bulk resistivity of pure salt markedly, as will water contents as low as 1000 or 2000 ppm in the less pure sequence of evaporites.

Electrical resistivity or conductivity is a diagnostic property in salt for detecting the presence of even small amounts of water, requiring only that an accurate and operable method for measuring resistivity (or conductivity) in place is available. Because of the oil and gas deposits in the vicinity of the WIPP Site, as well as the commercial deposits of evaporated minerals, extensive efforts to measure the resistivity of the section have been made over the past half-century. More recently, studies of resistivity have been carried out in conjunction with the GNOME experiment carried out by the U.S. Atomic Energy Commission (Keller, 1962), and with development of the WIPP Site using conventional electrical and electromagnetic methods

on the Earth's surface (Washburne and Sternberg, 1985). On the basis of past work, it appears feasible to detect fractures and brine concentrations in the salt using these surface-based surveying techniques. However, the question remains as to how well such features can be detected if the surveying methods were optimized to the problem of detecting small conductive features in layered salt. The Department of Geophysics at the Colorado School of Mines (CSM) undertook a study of exploration methods using very general forms of transmitter and receiver arrays operating underground. The results of these field measurements were an evaluation of the survey approach, in terms of both sensitivity to small features in the salt, and evaluation of the compatibility of the survey technique with ordinary mine operations and constraints.

IN-MINE ELECTROMAGNETIC SURVEYS

The initial phase of the CSM study was the use of conventional electromagnetic coupling equipment of short range to make measurements of the electrical resistivity of wall rock in the tunnel openings at the WIPP Site. Two systems were used: the EM-31 and EM-34 systems manufactured by Geonics, Ltd., of Toronto, Canada. In both systems, the mutual coupling between two induction coils is measured and converted to apparent resistivity using self-contained analog computation circuits. With the EM-31 system, the two coils are separated by a distance of 3 meters and energized at a frequency of 10 kHz. In the EM-34 system, the two induction coils are separated by 20 meters, and energized at one of two frequencies (6.4 or 1.6 kHz). The distance of search for the two instruments is 1 to 2 meters (for the EM-31) or 10 to 20 meters (for the EM-34).

Measurements were carried out with the EM-31 equipment along lines in drift N100 between station E140 and E3000, in drift E300 between stations S400 and S2100, and in drift E140 between stations S3700 and S2100. Readings were made at intervals of 3.2 or 7.6 meters along these intervals. Locations are indicated on a map of the WIPP Site in Figure 2.

Two profiles of resistivity measurements made with the EM-31 equipment are shown in Figures 3 and 4. Apparent resistivities are the integrated resistivity of the volume of rock interrogated by the system. Also, since conductivity is the reciprocal of resistivity, the two are used interchangeably. Measured conductivities range generally from 200 to 1000 $\Omega\text{-m}$ (1 to 5 millisiemens per meter). A distribution (histogram) of the conductivities measured with the EM-31 equipment is shown in Figure 5. This histogram shows that

the bulk conductivity (the reciprocal of resistivity) near the tunnels is between 2.0 and 2.5 millisiemens per meter with some areas having a higher resistivity of approximately 3.25 millisiemens per meter.

A single profile was measured with the EM-34. These measurements were recorded in Drift N100 as the first EM-31 profile (Figure 6). This profile was measured in N100 as a comparison of the EM-31, and was used as a control to test the accuracy of the EM-31. In the case of the EM-34, measured conductivities ranged from 7 to 10 millisiemens per meter (resistivity from 100 to 140 $\Omega\text{-m}$).

The deeper measurements (with the EM-34) show a conductivity several times larger than those measured with the EM-31 equipment. This may reflect an alteration in the conductivity of the rocks forming the walls of the tunnels, which are dried by the warm air of the ventilation system. Such a dried rind was observed by Keller(1962) in measurements made on the walls of tunnels in rhyolitic tuff at the Nevada Test Site.

The EM-34 gives much more uniform values than the EM-31. The EM-34 has a larger depth of penetration (up to 20 meters) so that it uses a larger rock volume to derive its resistivity than does the EM-31 (up to 4 meters). Because of this, the EM-31 is more able to detect small zones of higher or lower conductivity near the tunnels.

In Figure 7, the EM-31 and EM-34 resistivities are compared with the data Kessels et al. (1985) obtained from salt mines in Germany. Based on this comparison we expect the water content of the salt around the mine openings to increase from 0.8 to 1.0% (by weight) near the surface to between 2 and 3% at a depth of several meters.

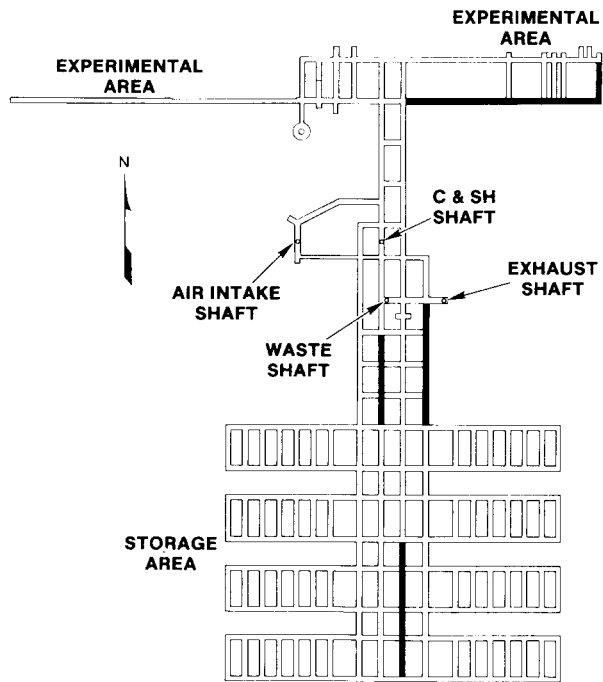


Figure 2. Location Map of EM-31 and EM-34 Traverses in the WIPP Underground Workings

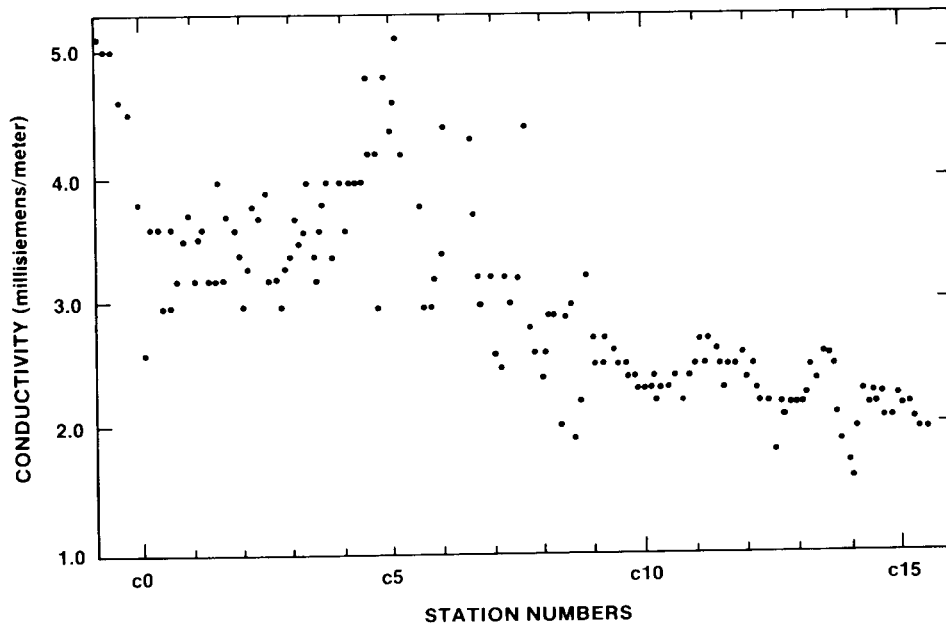


Figure 3. Plot of Conductivity vs. Distance for EM-31 Data Recorded in Drift N1100 between E140 and E1540

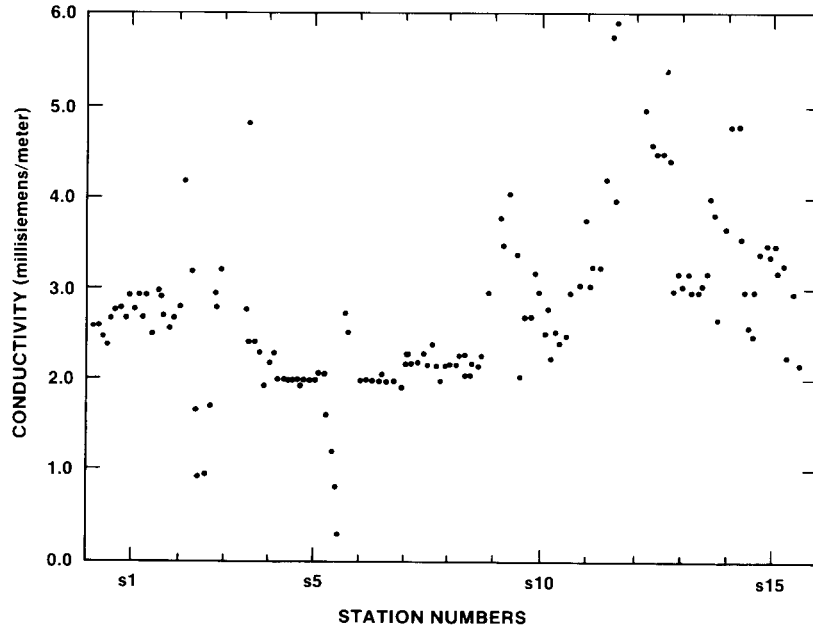


Figure 4. Conductivity vs. Distance in E140 from S3700

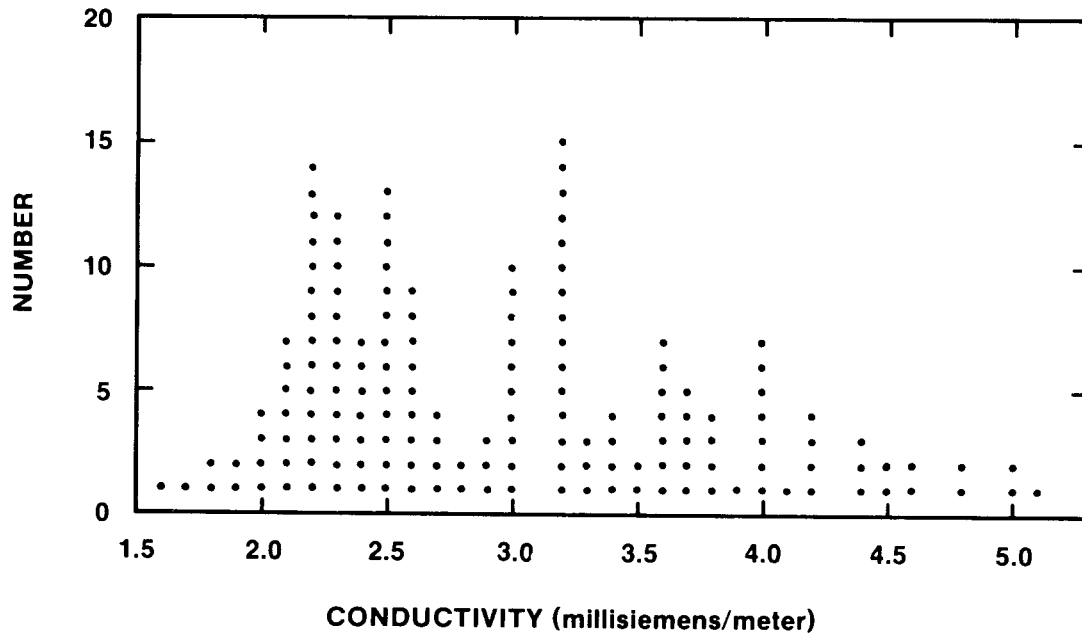


Figure 5. Histogram of Conductivity for Drift N1100 Measured with the EM-31

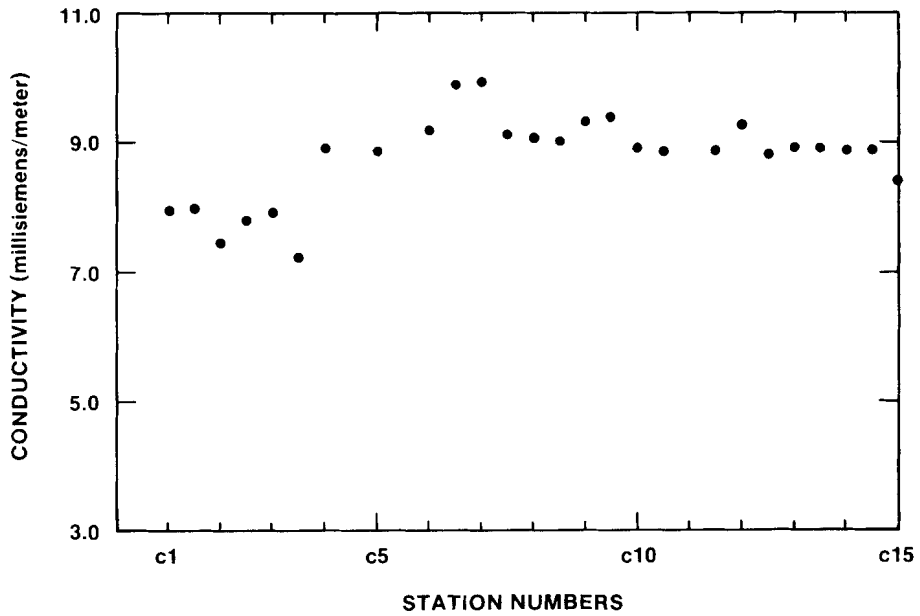


Figure 6. Conductivity vs. Distance in E140 from S3700 to S2100 in Drift N110 between E140 and E1540 with a 20-meter Loop Separation

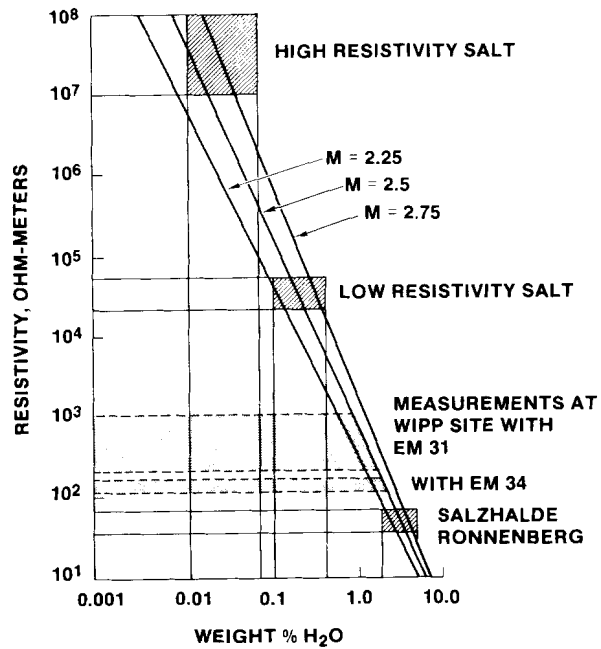


Figure 7. Relationship between Apparent Resistivity and Water Content for Different Factors of Concentration Showing Ranges for Resistivity and Water Contents

IN-MINE ELECTRICAL (DC) MEASUREMENTS

A major effort consisted of making electric field and electric potential measurements in the mine openings with a source of direct current sited on the surface, using a generalized resistivity mapping approach. Receiver locations are shown in Figure 8.

Experimental Setup

The rocks around the mine workings were energized using a fixed dipole source located on the earth's surface immediately to the north of the underground workings. Well casings extending to a depth of about 300 meters were used as electrodes; the two wells were located about 1.0 kilometer apart. The primary power supply used for this purpose was a 27-KVA, gasoline-engine-powered electrical generator. The AC output was converted to DC and switched at intervals of 4 s, to reverse the direction of current flow. The peak-to-peak level of the reversals in current to the source electrodes was nominally 200 amperes, though the level varied by about 10%, depending on line heating. Switching of the current to the source electrodes was controlled by a precision clock.

For the underground measurements, a temporary laboratory was established underground for the operation of a Digital Equipment Corporation MINC 11/23 computer as a data recording device. Voltages developed in the rock exposed in the mine were detected using pairs of copper/copper sulfate half-cells held against the rock forming the wall or floor of the tunnel at a measurement site. At each measurement site, four measurements were made; three of these were made with half-cells separated by 2 meters, and a fourth measurement was made

of the voltage drop between one half-cell at the measurement site and another reference half-cell near the underground laboratory. For the three measurements made with half-cell pairs separated by two meters, it was assumed that the ratio of voltage difference to separation was approximately equal to the electric field component along the direction of separation. The fourth measurement was taken to be the potential at the recording site, by adding to it a reference potential from the half-cell at the underground laboratory.

The voltage from a pair of half-cells was amplified with a battery operated amplifier at the measurement site, before transmitting it over a twisted pair of wires to the underground laboratory. At the laboratory, the signal from the measurement site was converted to digital form with 12-bit resolution, and recorded on a flexible disc by the MINC 11/23 computer. Each reversal of the electric field or potential was sampled 1024 times, using a second precision clock to synchronize the recording interval with the transmitter. A typical record of a voltage reversal is shown in Figure 9. A total of 135 measurements was made at the 45 sites indicated in Figure 8.

Apparent Resistivity with a Uniform Earth as a Reference

In DC electrical surveys, the first step in interpretation is usually the computation of an apparent resistivity; often such an apparent resistivity is similar in magnitude to the rock resistivity and can be used directly in evaluating the electrical properties of the rock in which the measurements were made. The usual definition of apparent resistivity is that it is the resistivity for a uniform half-space (a reference earth) that would have led to the observation of the same voltages as were ac-

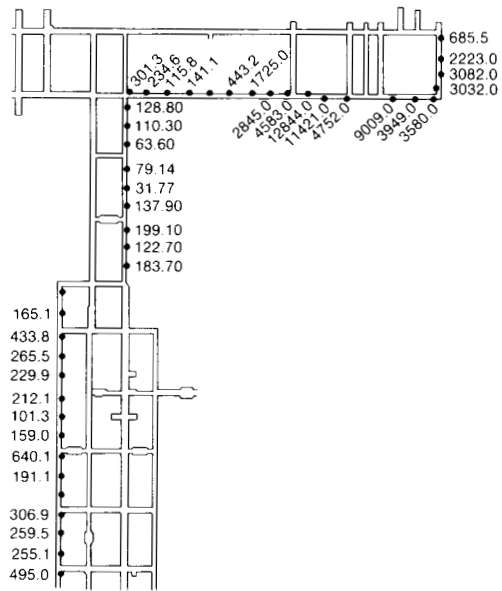


Figure 8. Location Map for DC-Resistivity Stations and Measured Apparent Resistivities

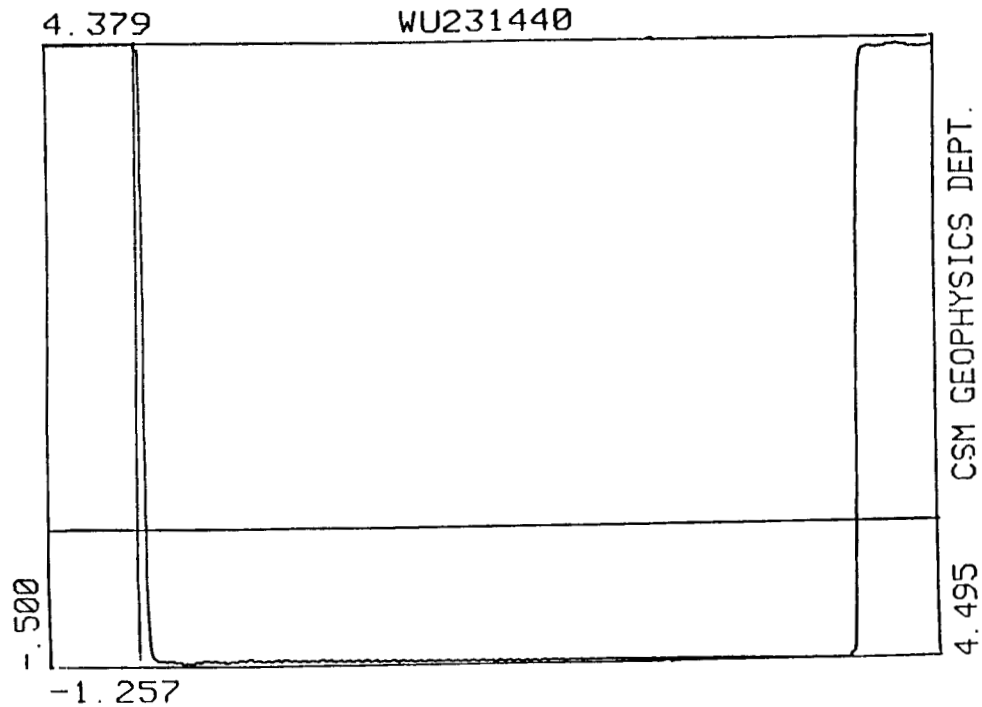


Figure 9. Typical DC Recording

tually observed in the real, usually inhomogeneous earth. Often, this apparent resistivity is viewed as a weighted average of the resistivities actually existing in the earth, with the weighting depending on how much of the excitation current enters any given part of the earth with a given resistivity. For a four-point array, the apparent resistivity can be calculated as:

$$\rho_{a,1} = \frac{4\pi}{\frac{1}{AM} - \frac{1}{AN} - \frac{1}{BM} + \frac{1}{BN}} \frac{V_{MN}}{I_{AB}} \quad (1)$$

where AM, AN, BM, and BN are the distances between the source electrodes A or B and the receiver electrodes M or N, V is the voltage measured between M and N and I is the current driven between A and B.

Calculations using Eq. 1 are based on an assumption that current flows from each of the well casings as though each were a point

electrode on the surface. Whether or not this is a reasonable assumption can be evaluated as follows. Flow of current from the length of casing at each well was simulated as ten individual flows from sections of casing at ten points along its extent. The location of these points and the fraction of current flowing in each was determined from the resistivity well log obtained in the well before casing. This resistivity log was integrated over the depth of each well to provide the conductance vs. depth curve shown in Figure 10. This curve has the character of a series of nearly straight-line segments, each segment representing an interval with relatively uniform resistivity. To simulate the full casing, it was assumed that a point electrode was located at each midpoint of an interval characterized by a straight-line segment. The amount of current assigned to each such point electrode was in proportion to the portion of the total conductance contributed by each layer. Equation (1) was again used to compute apparent resistivity, but in place of two

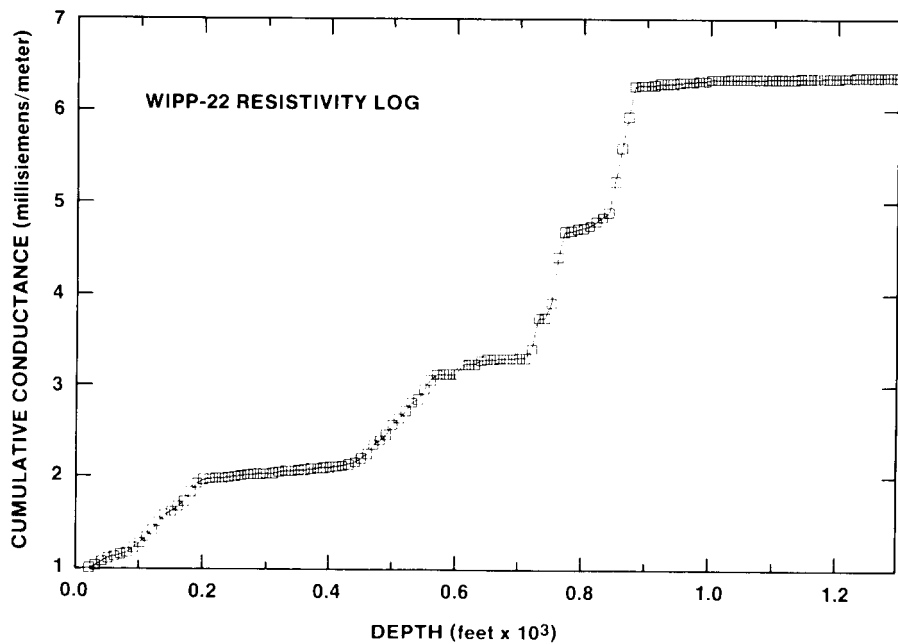


Figure 10. Cumulative Conductance vs Depth for WIPP 22 Resistivity Log

point electrodes, 20 point electrodes were used as sources. The differences found with this more exact approach were not overwhelming, though some values were changed up to 20%.

The distribution of apparent resistivity values was determined for the principal direction of the electric field. The range of apparent resistivities (tens and hundreds of $\Omega\text{-m}$) appears as low for salt. However, this is due to definition of apparent resistivity used to characterize the salt. The definition assumes that the current entering the salt must have the same density as it would in a uniform earth. In fact, the current from the sources spreads through the more conductive surface layers of rock, with the current density flowing into the underlying salt being very low in comparison with that in a uniform earth. As an extreme case, if salt might be perfectly insulating, then no current would flow from the surface layer into the salt, the measured electric field would be zero, and the computed apparent resistivity would be zero. Because of this, we have chosen to define apparent resistivity in terms of a three-layer reference model, described in the next section.

Apparent Resistivity with a Three-Layer Reference Earth

Since the current entering the salt at the Rustler/Salado contact does not have the same current density as a model based on a uniform distribution of resistivities as discussed above, apparent resistivities are not accurately calculated by Equation (1) alone. Therefore, we have developed a three-layer model to compute apparent resistivity and to account for the stratigraphy at WIPP (Figure 11). The surface layer is characterized by a conductance (S_1 : the ratio of thickness [h_1] to resistivity [ρ_1]), and is ener-

gized by vertical line electrodes (the well casings) providing a current, I , to the earth. The second layer is characterized by a transverse resistance, T_2 (product of thickness, h_2 , and resistivity, ρ_2). The third layer is assumed to have negligible resistivity (well logs show that the third layer has a resistivity less than $10 \Omega\text{-m}$). The three layers approximate the Rustler Formation (water-bearing), the Salado/Castile Formations (salt and anhydrite-bearing) and the Bell Canyon Formation (water-bearing), respectively.

With this model the electric field and the potential at the surface of the earth and at the surface of the second layer are virtually the same if the resistivity of the second layer is much greater than the resistivity of the surface layer. The potential at the bottom of the salt layer is about zero because of the high resistivity. Knowing the potential at the top and bottom of the salt layer, one then can predict the magnitude of the electric field within the salt merely by dividing the potential drop by the thickness of the salt. This requires knowledge of the conductance of the surface layer and of the transverse resistance and thickness of the salt.

The electric field on the surface can be computed using well-known methods (Keller and Frischknecht, 1966). For the model assumed here the electric field will at first decrease in inverse proportion to distance from a single well casing:

$$E(r) = \frac{I}{2\pi r S_1} \quad (2)$$

where r is the distance from casing to observation point, I is current, and S_1 is the conductance of the surface layer. At some large distance such that the area for vertical leakage of current from the first layer to the

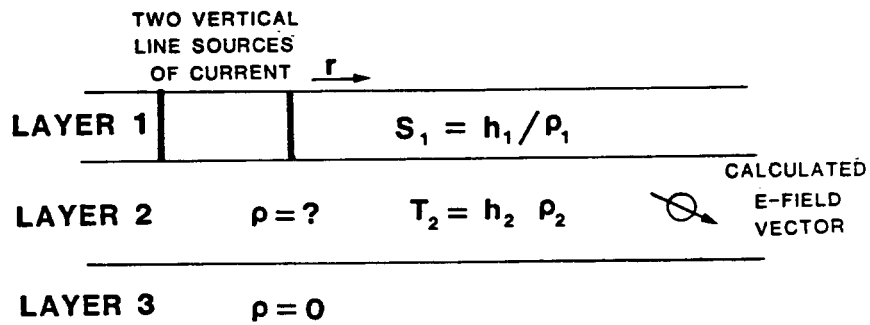


Figure 11. The Three-Layer Model

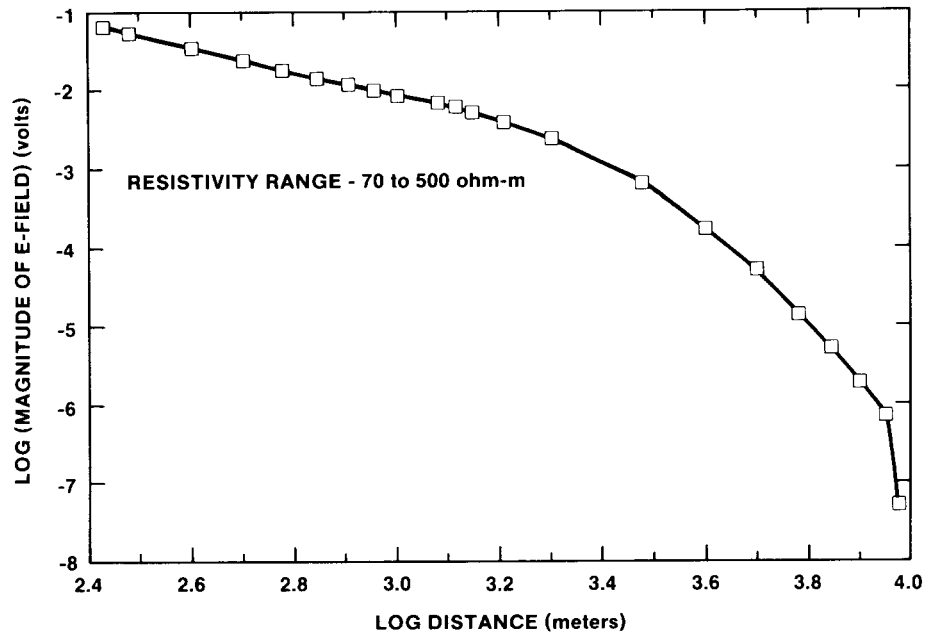


Figure 12. Electric Field Curve for a Three-Layer Earth

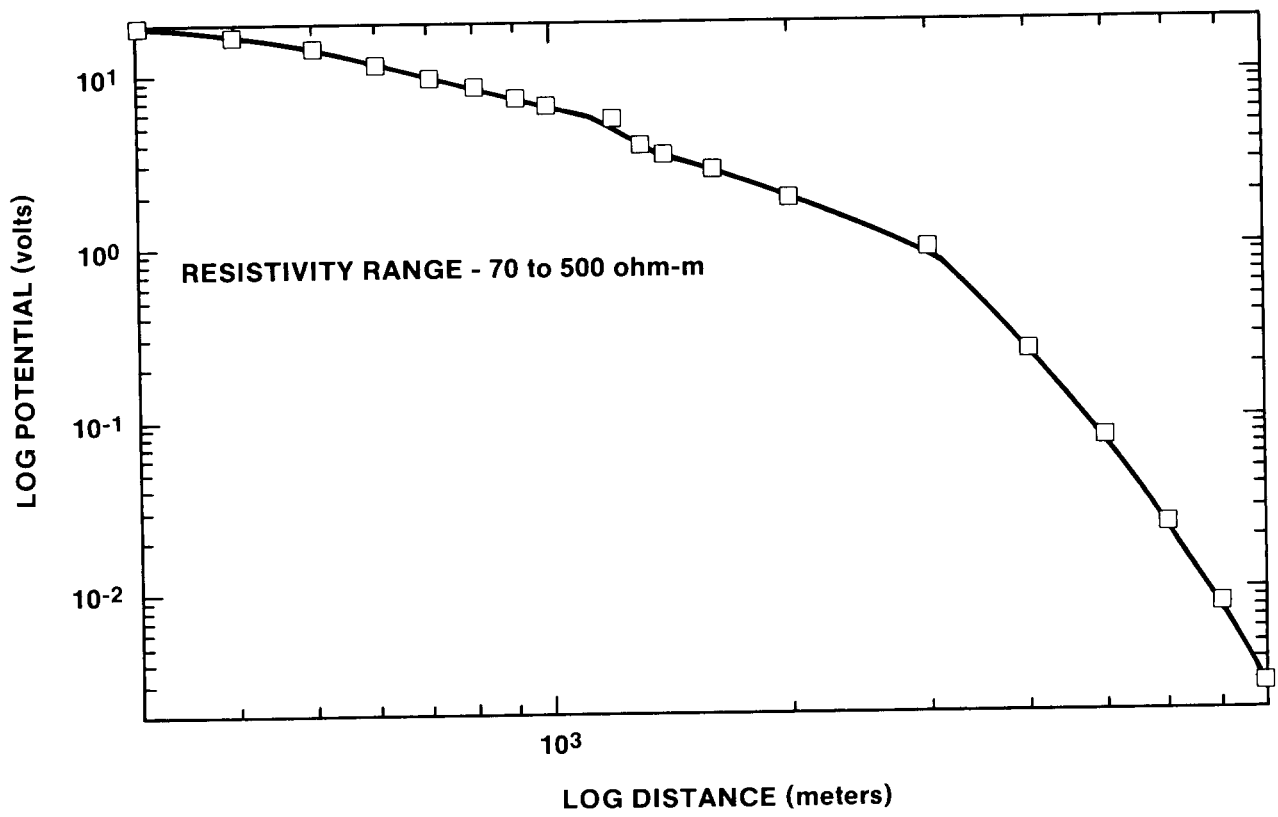


Figure 13. Total Potential Curve for Three-Layer Earth

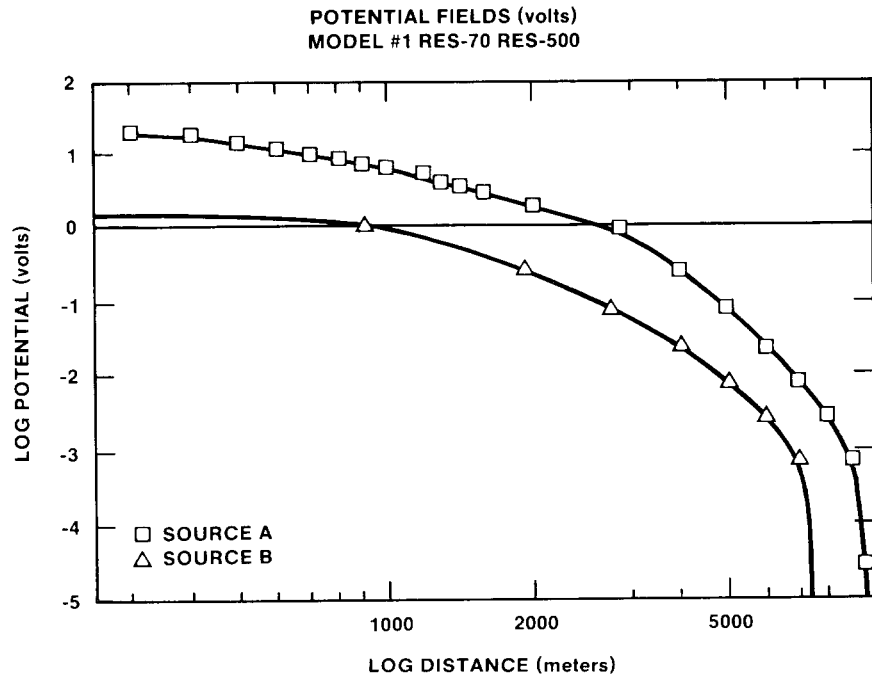


Figure 14. Potential Curves for Line Source A and B

third layer becomes adequate, the electric field will begin to fall rapidly with increasing distance (see Figure 12).

The potential, which is the quantity that we wish to know at the top surface of the salt, is found by integrating an electric field curve similar to the one shown in Figure 12 from infinity inwards to the point r , where the potential is to be evaluated. Because we have two vertical line sources, the net potential is the difference of the contribution from each (Figure 13). The potential was obtained by numerical integration and is shown by the curves in Figure 14.

In arriving at an apparent resistivity ($\rho_{a,2}$) for a three-layer reference earth, the following expression is used:

$$\rho_{a,2} = \frac{T_2 E_o}{h_2 E_r} \quad (3)$$

where E_r is the reference electric field, E_o is the observed electric field, and $\rho_{a,2}$ is the resistivity assumed for unit 2 ($\rho_{a,2}$ is specified once values of T_2 and h_2 are assigned).

Values of apparent resistivity were calculated based on a specific three-layer reference model (Figure 15). The distribution of values is shown in the histogram of apparent resistivities in ohm-m (Figure 16). The high apparent resistivities (10^3 to 10^4 ohm-m) are measured near the heated rooms, and the lower resistivities (10 to 10^3 ohm) are measured away from the heated rooms at the facility horizon. These values are in general agreement with EM-31 values, again indicating a bulk water content in the salt of about 2% by weight.

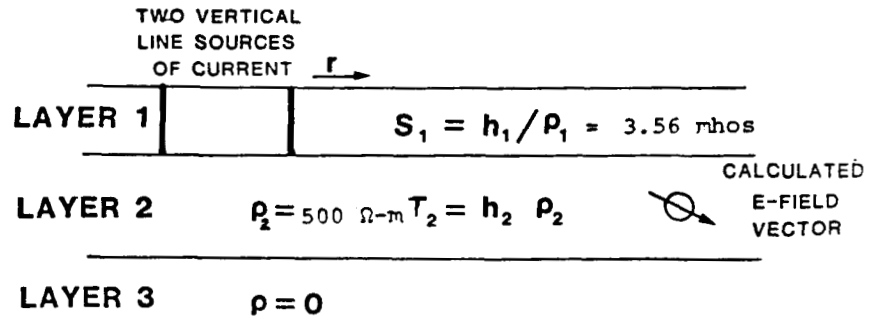


Figure 15. The Specific Three-Layer Model

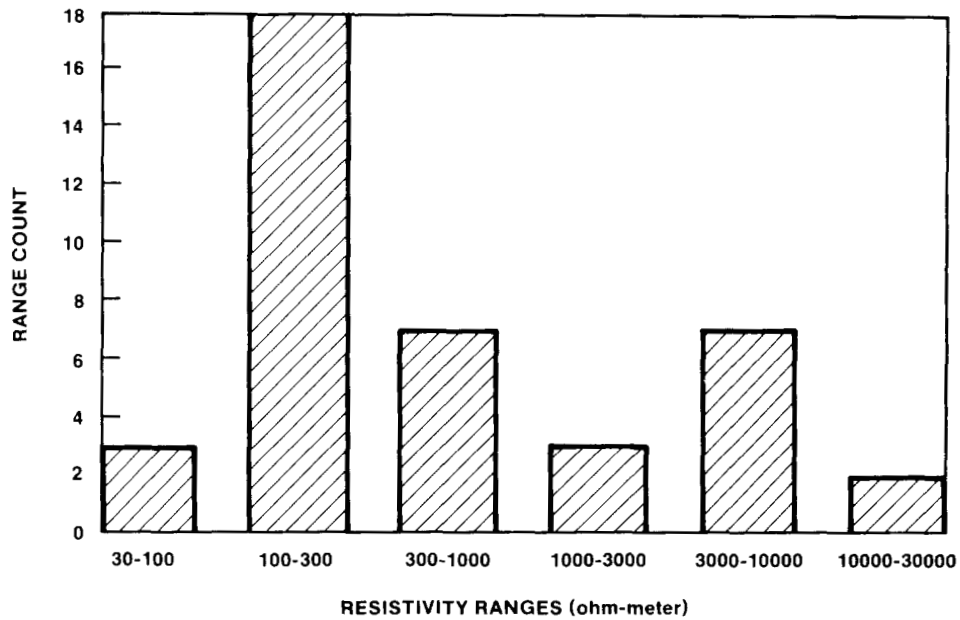


Figure 16. Distribution of Apparent Resistivities in ohm-m for a Three-Layer Earth

CONCLUSIONS

From all of the data obtained the bulk water content is between 1 and 3% by weight. The methods used are shallow (0 to 10 m) investigative tools which may be used to detect wet zones or water-filled fractures near the tunnels. This may be of importance in characterizing the development of fractures around

the excavations and delineating possible passageways for migration of introduced and formation water around the storage facilities. The next step in interpretation of the data is numerical modeling to simulate conductive anomalies in the vicinity of the tunnels.

REFERENCES

- Barrows, L., and J. Fett, 1985. A high-precision gravity survey in the Delaware Basin of Southeastern New Mexico: *Geophysics*, vol. 50, no. 5, pp. 825-833.
- Borns, D. J., L. J. Barrows, D. W. Powers, and R. P. Snyder, 1983. *Deformation of Evaporites near the Waste Isolation Pilot Plant (WIPP) Site*, SAND82-1069 (Sandia National Laboratories, Albuquerque, NM)
- Keller, G.V., 1962. *Electrical Properties of the Earth's Crust*, Part 2; Earth voltages observed during the GNOME explosion, USGS Open File Report, Project 8100.
- Keller, G.V., and F. C. Frischknecht, 1966. *Electrical Methods in Geophysical Prospecting*, Pergamon, Oxford, 517 pp.
- Kessels, W., I. Flentge, and H. Kolditz, 1985. DC geoelectric sounding to determine water content in the salt mine ASSE (FRG), *Geophysical Prospecting*, vol. 33, no. 3, pp. 436-446.
- Lishman, J.R., 1961. Salt bed identification from unfocused resistivity logs, *Geophysics*, vol. 26, no. 3, pp. 320-341.
- D. W. Powers, S. J. Lambert, S. E. Shaffer, L. R. Hill, and W. D. Weart, eds, 1978. *Geological Characterization Report, Waste Isolation Pilot Plant (WIPP) Site, Southeastern New Mexico*, Vols 1 and 2, SAND78-1596 (Sandia National Laboratories, Albuquerque, NM.)
- Washburne, J. and B. K. Sternberg, 1985. *Final Report: Electrical Surveys of WIPP-12 Site for Sandia National Laboratories*, Phoenix Geophysics

DISTRIBUTION:

U. S. Department of Energy, (5)
Office of Civilian Radioactive Waste
Management

Attn: Deputy Director, RW-2
Associate Director, RW-IO
Office of Program Administration
and Resources Management
Associate Director, RW-20
Office of Facilities Siting
and Development
Associate Director, RW-30
Office of Systems Integration
and Regulations
Associate Director, RW-40
Office of External Relations
and Policy

Office of Geologic Repositories
Forrestal Building
Washington, DC 20585

U. S. Department of Energy (3)
Albuquerque Operations Office
Attn: Bruce G. Twining
J. E. Bickel
R. Marquez, Director
Public Affairs Division

P.O. Box 5400
Albuquerque, NM 87185

U. S. Department of Energy
Attn: National Atomic Museum Library
Albuquerque Operations Office
P. O. Box 5400
Albuquerque, NM 87185

U. S. Department of Energy (9)
WIPP Project Office (Carlsbad)
Attn: J. Tillman (4)
A. Hunt
T. Lukow (2)
V. Daub
B. Young

P.O. Box 3090
Carlsbad, NM 88221

U. S. Department of Energy
Research & Waste Management Division
Attn: W. R. Bibb, Director
P. O. Box E
Oak Ridge, TN 37831

U.S. Department of Energy
Richland Operations Office
Nuclear Fuel Cycle & Production Division
Attn: R. E. Gerton
P.O. Box 500
Richland, WA 99352

U. S. Department of Energy
Research & Waste Management Division
Attn: W. R. Bibb, Director
P. O. Box E
Oak Ridge, TN 37831

U.S. Department of Energy
Richland Operations Office
Nuclear Fuel Cycle & Production Division
Attn: R. E. Gerton
P.O. Box 500
Richland, WA 99352

U. S. Department of Energy (5)
Office of Defense Waste and
Transportation Management
Attn: T. B. Hindman----- DP-12
M. Duff ----- DP-123
A. Follett ----- DP-122
C. H. George ----- DP-124
J. Mathur ----- DP-123

Washington, DC 20545

U. S. Department of Energy (2)
Idaho Operations Office
Fuel Processing and Waste
Management Division
785 DOE Place
Idaho Falls, ID 83402

U.S. Department of Energy (3)
Savannah River Operations Office
Defense Waste Processing
Facility Project Office
Attn: S. Cowan
W. J. Brumley
P.O. Box A
Aiken, SC 29802

U.S. Geological Survey
Branch of Regional Geology
Attn: R. Snyder
MS913, Box 25046
Denver Federal Center
Denver, CO 80225

U.S. Geological Survey
Conservation Division
Attn: W. Melton
P.O. Box 1857
Roswell, NM 88201

U.S. Geological Survey (2)
Water Resources Division
Attn: Cathy Peters
Suite 200
4501 Indian School, NE
Albuquerque, NM 87110

U.S. Nuclear Regulatory Commission (4)
Division of Waste Management
Attn: Michael Bell
Hubart Miller
Jacob Philip
NRC Library
Mail Stop 623SS
Washington, DC 20555

Environmental Evaluation Group (3)
Attn: Library
Suite F-2
7007 Wyoming Blvd., N.E.
Albuquerque, NM 87109

New Mexico Bureau of Mines
and Mineral Resources (2)
Attn: F. E. Kottolowski, Director
J. Hawley
Socorro, NM 87801

NM Department of Energy & Minerals
Attn: Kasey LaPlante, Librarian
P.O. Box 2770
Santa Fe, NM 87501

Battelle Pacific Northwest Laboratories (6)
Attn: D. J. Bradley
J. Relyea
R. E. Westerman
S. Bates
H. C. Burkholder
L. Pederson
Battelle Boulevard
Richland, WA 99352

Battelle Engineering Development Section
OWTD
Attn: C. B. Brumleve
7000 South Adams Street
Willowbrook, Illinois 60521

Savannah River Laboratory (6)
Attn: N. Bibler
E. L. Albenisius
M. J. Plodinec
G. G. Wicks
C. Jantzen
J. A. Stone
Aiken, SC 29801

Savannah River Plant
Attn: Richard G. Baxter
Building 704-S
Aiken, SC 29808

George Dymmel
SAIC
101 Convention Center Dr.
Las Vegas, NV 89109

INTERA Technologies, Inc. (4)
Attn: G. E. Grisak
J. F. Pickens
A. Haug
A. M. LeVenue
Suite #300
6850 Austin Center Blvd.
Austin, TX 78731

INTERA Technologies, Inc.
Attn: Wayne Stensrud
P.O. Box 2123
Carlsbad, NM 88221

IT Corporation (2)
Attn: R. F. McKinney
J. Myers
Regional Office - Suite 700
5301 Central Avenue, NE
Albuquerque, NM 87108

IT Corporation (2)
Attn: D. E. Deal
P.O. Box 2078
Carlsbad, NM 88221

Los Alamos Scientific Laboratory
Attn: B. Erdal, CNC-II
Los Alamos, NM 87545

Oak Ridge National Laboratory (4)
Attn: R. E. Blanco
E. Bondietti
C. Claborne
G. H. Jenks
Box Y
Oak Ridge, TN 37830

RE/SPEC, Inc.
Attn: W. Coons
P. F. Gnirk
P.O. Box 14984
Albuquerque NM 87191

RE/SPEC, Inc. (7)
Attn: L. L. Van Sambeek
D. B. Blankenship
G. Callahan
T. Pfeifle
J. L. Ratigan
P. O. Box 725
Rapid City, SD 57709

Rockwell International (1)
Attn: C. E. Wickland
Rocky Flats Plant
Golden, CO 80401

Rockwell International (3)
Atomics International Division
Rockwell Hanford Operations
Attn: J. Nelson (HWVP)
P. Salter
W. W. Schultz
P.O. Box 800
Richland, WA 99352

Science Applications International Corporation
Attn: Howard R. Pratt,
Senior Vice President
10260 Campus Point Drive
San Diego, CA 92121

Science Applications International Corporation
Attn: Michael B. Gross
Ass't. Vice President
Suite 1250
160 Spear Street
San Francisco, CA 94105

Systems, Science, and Software (2)
Attn: E. Peterson
P. Lagus
Box 1620
La Jolla, CA 92038

Westinghouse Electric Corporation (7)
Attn: Library
W. C. Moffitt
W. P. Poirer
W. R. Chiquelin
V. F. Likar
D. J. Moak
R. F. Kehrman
P. O. Box 2078
Carlsbad, NM 88221

University of Arizona
Attn: J. G. McCray
Department of Nuclear Engineering
Tucson, AZ 85721

University of Arizona (2)
Attn: J. J. K. Daemen
B. K. Sternberg
Dept. of Mining and
Geological Engineering
Tucson, AZ 85721

Colorado School of Mines (10)
Department of Geophysics
Attn: C. K. Skokan
1500 Illinois Street
Golden, Colorado 80401

University of New Mexico (2)
Geology Department
Attn: D. G. Brookins
Library
Albuquerque, NM 87131

Pennsylvania State University (1)
Materials Research Laboratory
Attn: Della Roy
University Park, PA 16802

Texas A&M University
Center of Tectonophysics
College Station, TX 77840

The University of Texas at Austin
Attn: Priscilla P. Nelson
Kenneth H. Stokoe
Dept. of Civil Engineering
Austin, Texas 78712

G. Ross Heath
College of Ocean and Fishery Sciences
University of Washington
Seattle, WA 98195

Thomas Brannigan Library
Attn: Don Dresp, Head Librarian
106 W. Hadley St.
Las Cruces, NM 88001

Hobbs Public Library
Attn: Ms. Marcia Lewis, Librarian
509 N. Ship Street
Hobbs, NM 88248

New Mexico State Library
Attn: Ms. Ingrid Vollenhofer
P.O. Box 1629
Santa Fe, NM 87503

New Mexico Tech
Martin Speere Memorial Library
Campus Street
Socorro, NM 87810

Pannell Library
Attn: Ms. Ruth Hill
New Mexico Junior College
Lovington Highway
Hobbs, NM 88240

Roswell Public Library
Attn: Ms. Nancy Langston
301 N. Pennsylvania Avenue
Roswell, NM 88201

WIPP Public Reading Room
Attn: Lee Hubbard, Head Librarian
Carlsbad Municipal Library
101 S. Halagueno St.
Carlsbad, NM 88220

Government Publications Department
General Library
University of New Mexico
Albuquerque, NM 87131

NATIONAL ACADEMY OF SCIENCES. WIPP PANEL

Dr. Charles Fairhurst, Chairman
Department of Civil and
Mineral Engineering
University of Minnesota
500 Pillsbury Dr. SE
Minneapolis, MN 55455

Dr. John O. Blomeke
Route 3
Sandy Shore Drive
Lenoir City, TN 37771

Dr. John D. Bredehoeft
Western Region Hydrologist
Water Resources Division
U.S. Geological Survey (M/S 439)
345 Middlefield Road
Menlo Park, CA 94025

Dr. Karl P. Cohen
928 N. California Avenue
Palo Alto, CA 94303

Dr. Fred M. Ernsberger
250 Old Mill Road
Pittsburgh, PA 15238

Dr. Rodney C. Ewing
Department of Geology
University of New Mexico
200 Yale, NE
Albuquerque, NM 87131

Dr. William R. Muehlberger
Department of Geological Sciences
University of Texas at Austin
P.O. Box 7909
Austin, TX 78712

Dr. Frank L. Parker
Department of Environmental Engineering
Vanderbilt University
Nashville, TN 37235

Dr. D'Arcy A. Shock
233 Virginia
Ponca City, OK 74601

Dr. Peter B. Myers, Staff Director
National Academy of Sciences
Committee on Radioactive
Waste Management
2101 Constitution Avenue
Washington, DC 20418

Staff Officer
Board on Radioactive Waste
Management
GF462
2101 Constitution Avenue
Washington, D. C. 20418

Studiecentrum Voor Kernenergie
Centre D'Energie Nucleaire
Attn: Mr. A. Bonne
SCK/CEN
Boeretang 200
B-2400 Mol
BELGIUM

Atomic Energy of Canada, Ltd. (2)
Whiteshell Research Estab.
Attn: Peter Haywood
John Tait
Pinewa, Manitoba, CANADA
ROE ILO

Dr. D. K. Mukerjee
Ontario Hydro Research Lab
800 Kipling Avenue
Toronto, Ontario, CANADA
M8Z 5S4

Mr. Jean-Pierre Olivier
OECD Nuclear Energy Agency
Division of Radiation Protection
and Waste Management
38, Boulevard Suchet
75016 Paris, FRANCE

Claude Sombret
Centre D'Etudes Nucleaires De La Vallee Rhone
CEN/VALRHO
S.D.H.A. BP 171
30205 Bagnols-Sur-Ceze
FRANCE

Bundesministerium fur Forschung und Technologie
Postfach 200 706
5300 Bonn 2
FEDERAL REPUBLIC OF GERMANY

Bundesanstalt fur Geowissenschaften und Rohstoffe
Attn: Michael Langer
Postfach 510 153
3000 Hannover 51
FEDERAL REPUBLIC OF GERMANY

Hahn-Mietner-Institut fur Kernforschung
Attn: Werner Lutze
Glienicke Strasse 100
100 Berlin 39
FEDERAL REPUBLIC OF GERMANY

Institut fur Tieflagerung (4)
Attn: K. Kuhn
Theodor-Heuss-Strasse 4
D-3300 Braunschweig
FEDERAL REPUBLIC OF GERMANY

Kernforschung Karlsruhe (1)
Attn: K. D. Closs
Postfach 3640
7500 Karlsruhe
FEDERAL REPUBLIC OF GERMANY

Physikalisch-Technische Bundesanstalt
Attn: Peter Brenneke
Postfach 33 45
D-3300 Braunschweig
FEDERAL REPUBLIC OF GERMANY

D. R. Knowles
British Nuclear Fuels, plc
Risley, Warrington, Cheshire WA3 6AS
1002607 GREAT BRITAIN

Shingo Tashiro
Japan Atomic Energy Research Institute
Tokai-Mura, Ibaraki-Ken
319-11 JAPAN

Netherlands Energy Research Foundation ECN (2)
Attn: Tuen Deboer, Mgr.
L. H. Vons
3 Westerduinweg
P.O. Box 1
1755 ZG Petten, THE NETHERLANDS

Svensk Kärnbränsleforsörjning AB
Attn: Fred Karlsson
Project KBS
Kärnbränslesakerhet
Box 5864
10248 Stockholm, SWEDEN

Sandia Internal:

1510 J. W. Nunziato
1520 C. W. Peterson
1521 R. D. Krieg
1521 J. G. Arguello
1521 H. S. Morgan
3141 S. A. Landenberger (5)
3151 W. I. Klein (3)
3154-1 C. H. Dalin, (8) for DOE/OSTI
6000 D. L. Hartley
6230 W. C. Luth
6232 W. R. Wawersik
6233 T. M. Gerlach
6233 J. L. Krumhansl
6300 R. W. Lynch
6310 T. O. Hunter
6313 T. Blejwas
6330 W. D. Weart
6330 V. L. Bruch
6330 S. Pickering
6331 A. R. Lappin
6331 R. L. Beauheim
6331 D. J. Borns (10)
6331 P. B. Davies
6331 S. J. Lambert
6331 R. Z. Lawson
6331 K. L. Robinson
6331 M. D. Siegel
6332 L. D. Tyler
6332 R. Beraun
6332 B. M. Butcher
6332 B. L. Ehgartner

6332 M. A. Molecke
6332 D. E. Munson
6331 J. Nowak
6332 R. J. Roginski
6332 J. C. Stormont
6332 T. M. Torres
6332 Sandia WIPP Central Files (800GEOPH) (10)
6333 T. M. Schultheis
6334 D. R. Anderson
6334 S. Bertram-Howery
6334 K. Brinster
6334 L. Brush
6334 M. S. Y. Chu
6334 L. S. Gomez
6334 R. Guzowski
6334 R. L. Hunter
6334 M. G. Marietta
6334 R. R. Rechard
6334 A. Rutledge
7100 C. D. Broyles
7110 J. D. Plimpton
7120 M. J. Navratil
7125 R. L. Rutter
7125 J. T. McIlmoyle
7130 J. O. Kennedy
7133 O. Burchett
7133 J. W. Mercer
7135 P. D. Seward
8524 P. W. Dean (SNLL Library)